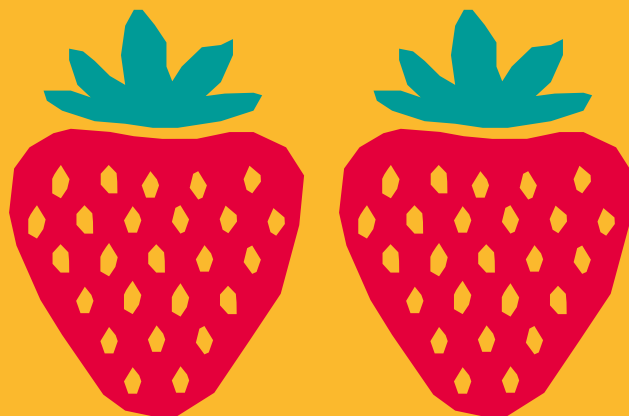


Provoking Thought

Did you know?
Lemons contain more
sugar than strawberries.



Ofsted
Outstanding
Provider

Prospectus 2021/22



**Dudley
Sixth**
for A levels

Subjects

Accounting	ICT*
Biology	Law
Business	Mathematics
Chemistry	Media Studies
Computer Science	Philosophy
Criminology (Applied)	Photography
Economics	Physics
English Language	Politics
English Literature	Product Design
Environmental Science	Psychology
Extended Project Qualification (EPQ)	Religious Studies
Film Studies	Sociology
Fine Art	Sport & Physical Education
French	Textile Design
Geography	
Geology	
German	
Graphic Design	
History	

*This qualification is delivered as a Level 3 BTEC or technical certificate, equivalent to an A level.

Contents

Welcome to your future	04
Our vision	05
Your opportunities	08
Inspiring facilities for inspired minds	09
Enhance	12
Extra curricular	13
Students' Union.....	15
Learner performance	17
Moving on	19
What we love about Dudley Sixth	21
The results speak for themselves	23
General entry requirements.....	25
Subjects	26
Our approach	63
Financial help.....	66
Admissions.....	67
How to find us	68

**WE ARE OUTSTANDING
WE ARE DUDLEY**

Dudley College of Technology is celebrating its
Outstanding Ofsted rating
dudleycol.ac.uk/About-Us/Ofsted-2017

Ofsted
Outstanding
Provider

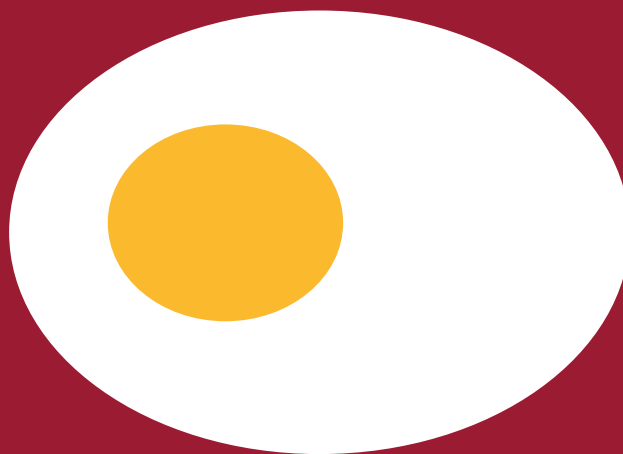


**THE QUEEN'S
ANNIVERSARY PRIZES**
FOR HIGHER AND FURTHER EDUCATION
2019



Did you know chickens
save our lives?

90 million fertilised
chicken eggs make flu
vaccines each year.



Welcome to your future

I am delighted that you are considering Dudley Sixth for your A level studies. We offer A level courses for over 500 bright and motivated learners in fabulous facilities, backed up with excellent support and teaching. Year-on-year, our learners' results just keep getting better. In 2020 we celebrated pass rates of 100%.

As a purpose built, self-contained A level centre with the goal to educate and enthuse the next generation of learners, Dudley Sixth is fast gaining a reputation for being one of the best places in the region to study A levels.

We consider ourselves to be your gateway to Higher Education, Higher Apprenticeships or employment. The majority of our learners plan to progress onto university and many accept places at a range of Russell Group universities, including Birmingham, King's College London and Manchester, as well as other local prestigious universities including Aston and Keele.

With subject specialists guiding you through your two-year A level programme, you will receive the highest quality education. Our aspiration is for you to achieve your potential and have a very successful future.

To get a real feel for life at Dudley Sixth, it's a good idea to come and talk to us at one of our open events. You can have a look round our fantastic facilities and meet our dedicated staff. We'd be delighted to meet you and hear about your plans for your future.

*Find out for yourself
why Dudley Sixth
could be the place
for you.*

In the meantime, you can find out more by visiting **www.dudleysixth.co.uk** or calling our enquiries team on **0800 783 6095**. We encourage learners and parents to ask plenty of questions – and there's no time like the present to get started.

L. Stevenson

Lisa Stevenson
Assistant Principal




Our vision

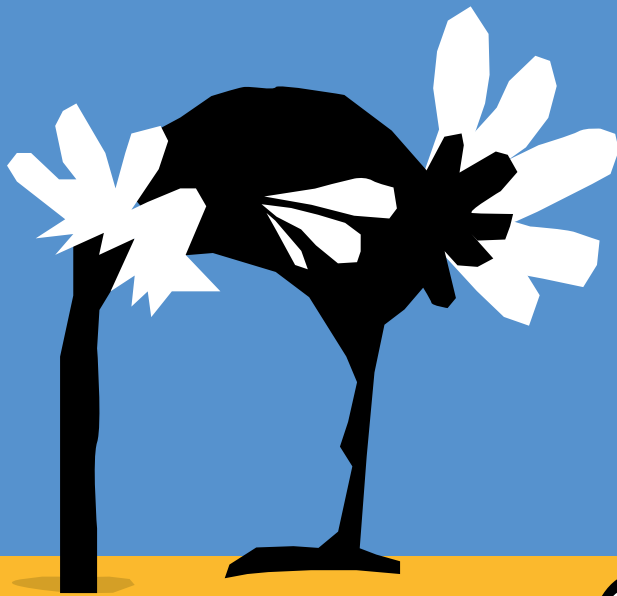
Dudley Sixth doesn't believe in spoon-feeding learners with information or teaching them merely to pass examinations. Of course exam success is vital to your onward career at university or work, but so is the ability to think for yourself, to question norms and to explore the ideas that grab your interest.

Thought-provoking discussions – rather than textbooks and lectures – can help to inspire a lifelong love of learning in us all. At Dudley Sixth we aim to nurture generations of inquiring minds.

To help you thrive in your studies, we have created an environment that is happy, warm and supportive. We will celebrate your successes and encourage you to be the best you can possibly be.



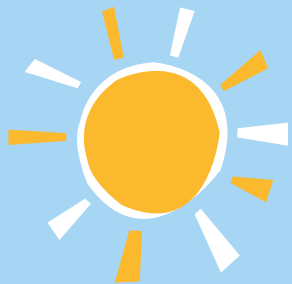
*See why learning
is about more
than exams
and textbooks.*



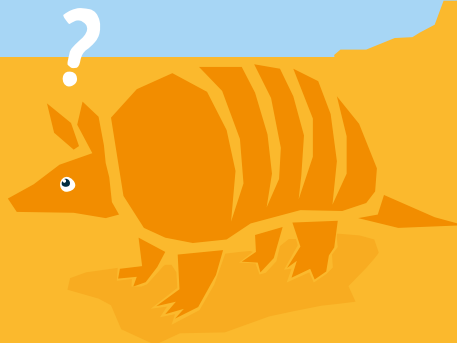
Did you know?



An ostrich's eye is
bigger than its brain.



Imagine never seeing
a cloud in the sky...



The Atacama Desert of
Chile and Peru is the driest
place on Earth. In the centre
of this desert, there are
places where rain has never
been recorded.

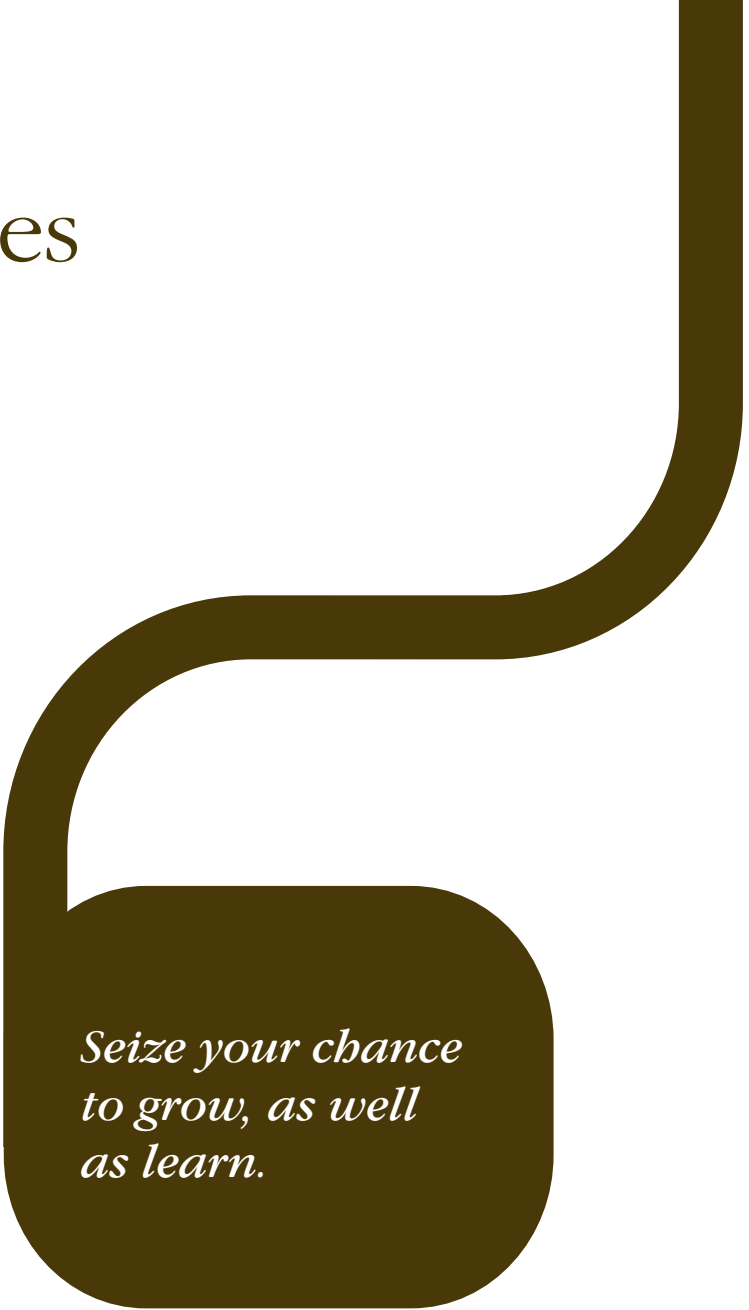


Your opportunities

Dudley Sixth furthers your career plans with an exciting range of traditional and modern A level courses. But you should not only leave Dudley Sixth with excellent qualifications. It is our hope that you will progress to adult life feeling confident, mature and ready to pursue your ambitions.

We expect a lot from you – and we think you'll get a lot back in return.

Our town centre location makes Dudley Sixth easy to access. Alongside excellent teaching from experienced staff, the facilities of the Dudley Learning Quarter – including a library, sport and fitness centre, computer zones and quiet, study-friendly support areas – will help to create a culture of high achievement for you and your fellow learners.



*Seize your chance
to grow, as well
as learn.*

Inspiring facilities for inspired minds

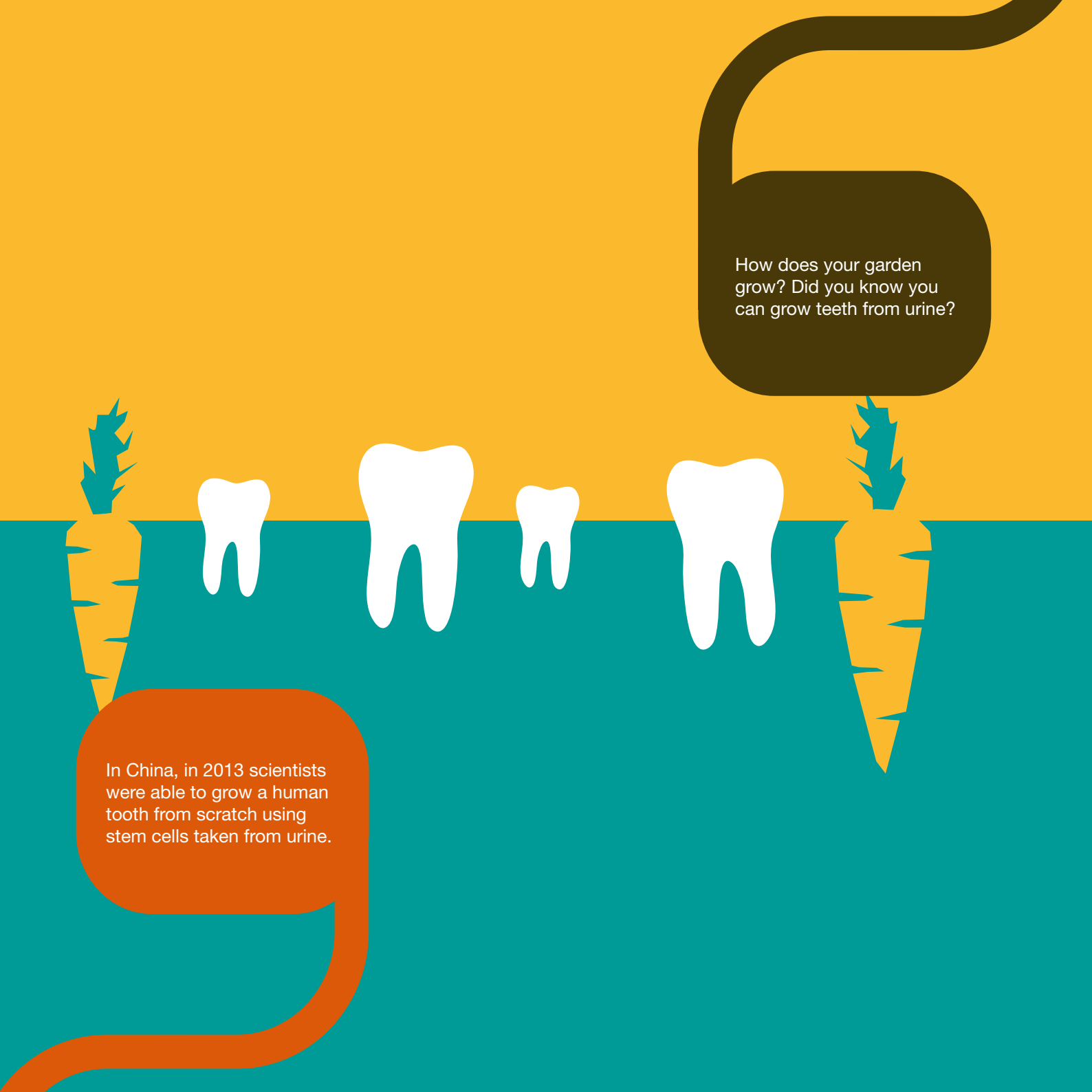


Dudley Sixth has been built just for you!
It has well-equipped teaching rooms and
laboratories as well as computer zones
and quiet study-friendly support areas.





We've thought about what you need to achieve your A levels, including the right environment. We provide the rooms, equipment and resources you need to study, together with a happy and supportive learning environment.

An infographic with a yellow background and a teal ground line. Two carrots are shown, one on the left and one on the right. Between them are four white teeth of varying sizes. A dark brown speech bubble is in the top right, and an orange speech bubble is in the bottom left.

How does your garden grow? Did you know you can grow teeth from urine?

In China, in 2013 scientists were able to grow a human tooth from scratch using stem cells taken from urine.



Enhancing the learning experience

Dudley Enhance, packed full of exciting technology and designed to support A level studies, one of Dudley Enhance's key features is a large lecture theatre which can seat up to 80 learners.

The strikingly modern building also houses Stir Café and Bistro where learners can relax with drinks and refreshments. Snacks and meals will be produced by Dudley College of Technology's catering learners in the purpose-built training kitchen, giving these chefs-in-the-making that all-important experience to make them stand out from the crowd when they enter the hospitality industry.

This distinctive building, situated between Dudley Sixth and Dudley Advance, is guaranteed to provide the best possible learning environment for you to succeed.



Extra curricular

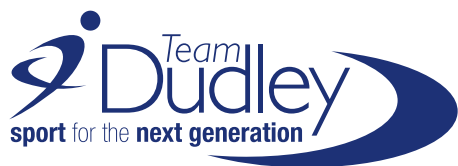
Programme of study

Your course is made up of a number of elements, which combined make a programme of study. These elements include:

- Your substantial A level qualifications
- Work experience (if desired)
- GCSE English/mathematics (if required)
- Tutorial time and study skills.

Team Dudley

We are very proud to be working with Team Dudley to offer a fantastic sports development programme which gives you the chance to study and pursue your sporting interests at the same time.

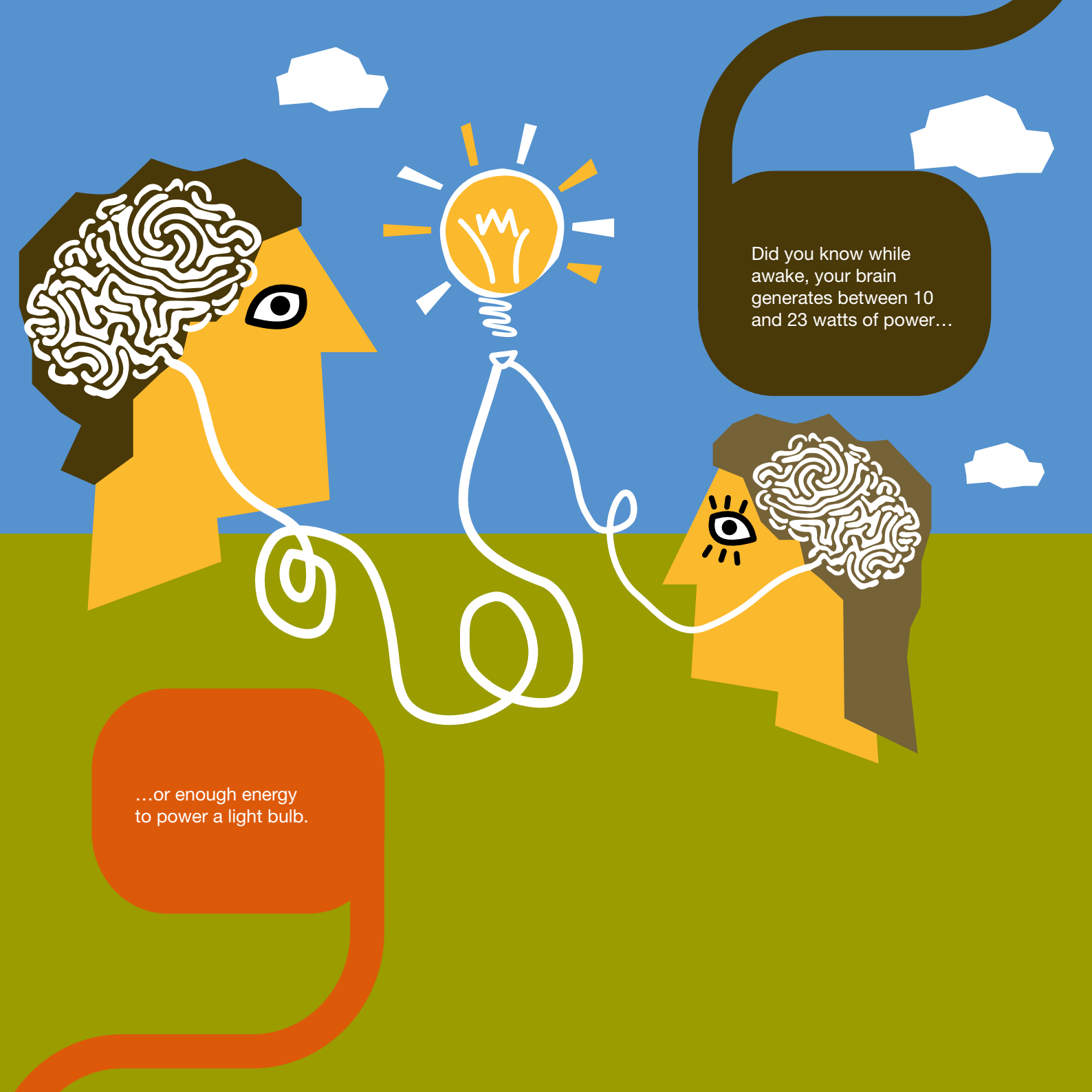


Through Team Dudley Sport, you can:

- Receive specialised coaching and training
- Compete regionally and nationally in Association of College (AOC) tournaments
- Attend trials for regional and national squads.

To find out more visit **www.teamdudley.co.uk**

*Have some
serious fun during
your time at
Dudley Sixth.*



...or enough energy
to power a light bulb.

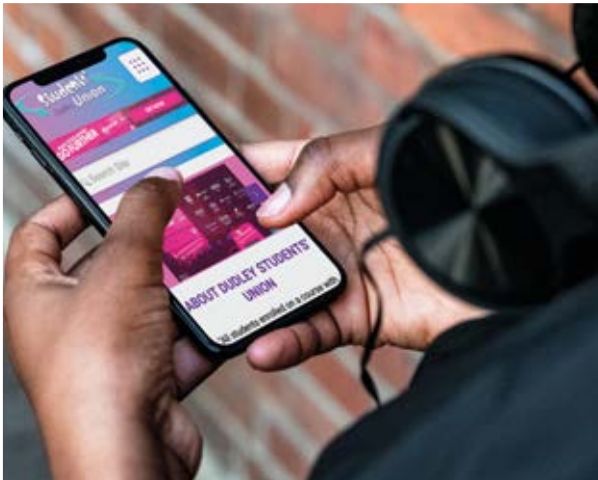
Did you know while
awake, your brain
generates between 10
and 23 watts of power...

Students' Union



Students, have you ever wondered what the Students' Union is? The good news is, you're already enrolled as a member of the Students' Union and it's free for all Dudley Sixth students.

The Students' Union is run by students FOR students, and every year you get the opportunity to vote for who leads the Union. All students are encouraged to run in the elections for class rep or union officer, these students then attend training and meetings, enhancing college life for all students.



Your Union is part of the National Union of Students, which offers you a direct link to have your voice heard by the government. The Students' Union are a political organisation, advocating equal opportunities, a cleaner environment and a better future for you.

If you have any problems whilst on your course or you get into trouble at college, we will be there to listen and make sure you get the support you deserve. We are by your side!

Education is important, and our number one job is to ensure you receive the education you deserve, however that's not all, as friendship and fun is also really important to us. The Students' Union arranges trips and activities to make college life as enjoyable as possible, and at a discounted rate!

Keep an eye on our social media and website to stay updated.

Welcome to the Students' Union, get ready for an amazing year, the future is exciting and you've got this!

Creating Community

By offering activities, events, clubs and social groups the SU support students to get the most from their social life, meet new people and make new friends.

Throughout the year, the Union organise a variety of trips/events which include; Freshers Fayre, Alton Towers, Young People's Question Time, London Parliament,

Find out more about your SU

 @DudleySU
 Dudley Student Union
 01384 363 412
 The Broadway - Room B4
 studentunion@dudleycol.ac.uk
 @dudley.su
 dudleysu.co.uk



'The SU also sell a student discount card the Totum card, they can help students save lots of money and also double up as age ID so check out www.totum.com to see whether you'd like to purchase one'

Blackpool Pleasure Beach, nightclub parties, Drayton Manor, residentials, adventure activity pursuits and sporting activities. There will also be a number of smaller trips/events running directly related to specific student clubs and student requests. All Union activities are open to all members. If there is something you are particularly interested in doing let us know, we're always looking for inspiration!



Clubs & Societies

Do you have a passion for something? Whether it is gaming, keeping fit or chocolate appreciation, the Union can help you to set up a club or society. We will support you with financial costs, resources and help you run trips/ events throughout the year. If you are unsure about what you would like to do, some clubs such as 'Social Football, Retro Gamers, Pool Society and Breakfast club will be running from September. All students are welcome to join any club or society at any time of the year.



Duke of Edinburgh Bronze and Silver Awards

These exciting and prestigious awards offered through the Students' Union give you the opportunity to take part in a range of challenging activities. You will learn map reading and survival skills, take part in expeditions and complete a volunteering project. You will make new friends and enjoy a spirit of adventure.

Learner performance

As a learner at Dudley Sixth you are on the brink of adulthood and so our teaching staff will treat you accordingly, encouraging you to be independent and express your thoughts and ideas as an individual.

All learners, however, may need extra support from time to time. You may be feeling vulnerable because of friendship, relationship or family problems, or perhaps you are struggling to cope with your homework.

To ensure you are performing at your best we have a first class system of support. Your Pastoral Team will usually be your first point of contact for advice and will set you meaningful targets and challenges to meet. Our learner support team is happy to help at any time too.

We also have qualified counsellors, and other advisers who can give you confidential support on any matter which might be holding you back.

*Choose a supportive,
happy environment
for achieving
your potential.*





Performance Improvement Programme

Dudley Sixth provides a Performance Improvement Programme (PIP) which focuses on supporting learners to develop a mindset for success. The programme itself is designed to develop the skills and attributes that you will need to build in order to be successful in your A level studies and beyond. Learners will reflect on and develop their mindset in 5 key areas - Vision, Effort, Systems, Practice and Attitude (VESPA). The 4As programme is designed to sit alongside VESPA to support you to achieve the best grades you can and go on to a positive step towards your next career ambitions.



Preparing you for life after college:

- Health and well-being
- Online safety
- Equality and diversity
- Money matters
- Careers
- The world of work
- Preparing for progression to university
- Enterprise activities
- Keeping safe
- Relationships.

Supporting you to achieve the best you can in your studies:

- Report writing
- Harvard Referencing
- Presentation delivery
- Time management
- Exam preparation
- Study skills
- Attendance
- SMART target setting
- Progress to date
- Destination.

As part of the PIP there will be cross-college activities including:

- Learner voice – vote for a class rep
- Freshers' fayre
- Higher Education careers fayre
- The Big Draw – your chance to contribute to a huge college collage
- Planning for skills competitions
- Fundraising for various charities.

Moving on

Dudley Sixth provides an important springboard between school and Higher Education or the world of work, so we always have our eyes on your future. However, the choices that lie before you can be complex and confusing – that's where we come in.

We have the expertise to guide you through the whole university admissions process, through both personal advice sessions and by providing the opportunity to attend university open days and Higher Education fairs.

We aim to make sure your next step is the right one for you.

*Arm yourself with
the skills you need
in the future.*

There is the option of staying local to go higher with Dudley College of Technology who offer a range of HNCs, HNDs and Foundation Degrees including:

- Animal Management
- Art & Design
- Biology
- Building Information Modelling
- Business
- Computer Games Design
- Computing
- Construction
- Creative Digital Media
- Early Childhood Studies
- Electrical & Electronics
- Engineering
- Exercise and Wellness Management
- Fashion & Textiles
- Music & Audio Production
- Performing Arts
- Public Services
- Sport
- Travel & Tourism.

There is also the option of Higher Apprenticeships after your A levels.

Higher Apprenticeships are available at a range of levels (levels 4-7), from the equivalent of a Foundation degree to a Bachelor's degree. Apprenticeships are ideal if you are looking to enter the world of work and study for a higher level qualification at the same time.

Dudley College of Technology offers Higher Apprenticeships in:

- Adult Careworker Level 5
- BEMS Control Engineer Level 4
- Construction Design and Build Technician Level 4
- Construction Quantity Surveying Technician Level 4
- Construction Site Engineering Technician Level 4
- Engineering Manufacturing Technician - Electrical Level 4
- Engineering Manufacturing Technician - Mechanical Level 4
- Healthcare Practitioner Level 5
- Healthcare Science Associate Level 4
- Information Manager Level 4
- Operations /Department Manager Level 5.

To start a Higher Apprenticeship, you will need one of the following Level 3 qualifications: A levels, Advanced Level Diploma or an NVQ Level 3.



**To find out more visit:
www.dudleycol.ac.uk**

What we love about Dudley Sixth



“A levels are definitely harder than GCSEs, but you get lots of help from the teachers which has made it easier to settle down.”

“When we’re not in lessons there’s loads of computers around so you can get on with your work.”



“I’m studying for my Chemistry A level, which is great because all the desks and equipment in the labs are new.”



The results speak
for themselves

100%

pass rate in all
A level subjects*

*2020 results.

General entry requirements

The following pages outline the subjects available at Dudley Sixth. All learners study three or four subjects. To be in with a chance of joining us in September 2020 you are encouraged to apply as soon as possible.

Entry Requirements

To study A levels, you will require a minimum of 5 GCSEs including two at grade 6 and three at grade 5. English language must be at a minimum of grade 4.

Individual subjects may have specific entry requirements (see courses for details).

English and mathematics

We are committed to improving your English and mathematics skills while you are learning with us. You will have the opportunity to study English and/or mathematics as part of your main programme of study and all of your teachers will help you develop these skills throughout your time with us. If you do not have a GCSE (grade 4 or above) in English or mathematics then these subjects will be an integral part of your course.

*Follow your
interests and
achieve your
dreams...*

Our aim is to get every learner who studies here to achieve GCSEs in English and mathematics (grade 4). However, we do recognise that not all learners will be ready to take a GCSE when they start their programme and for this reason we have developed a progression route to help them along the way.

Accounting

Course Aims

While studying this subject you will develop a knowledge and understanding of both financial and management accounting. It will help you to understand the responsibilities of the accountant and the impact of their recommendations on the business and the wider environment. You will build knowledge and understanding of key concepts, principles and techniques that you can apply to real-life scenarios, developing the ability to solve problems logically, analyse data methodically, make reasoned choices and communicate effectively.

Entry Requirements

You will require a grade 6 in mathematics and a grade 5 in English language, in addition to the general entry requirements.

Course Content

Paper 1

- Introduction to the role of the accountant in business
- Types of business organisation
- The double entry model
- Verification of accounting records
- Accounting concepts used in preparation of account records
- Preparation of financial statements of sole traders
- Accounting for Limited companies
- Analysis and evaluation of financial information
- Accounting for organisations with incomplete records
- Partnership accounts
- Interpretation, analysis and communication of accounting information
- Impact of ethical considerations.

Paper 2

- Introduction to the role of the accountant in business
- Types of business organisation
- The double entry model
- Budgeting
- Marginal costings
- Standard costing and variance analysis
- Absorption costing and activity based costing
- Capital investment appraisal
- Interpretation, analysis and communication of accounting information
- Impact of ethical considerations.

Course Assessment

Written examinations.

Materials

Recommended textbooks to be advised by your tutor, which are available from our library.

Progress

A degree in accounting at university or AAT level 3 or 4, Apprenticeship programmes, as well as progressing to CIMA, ACCA and other professional accountancy programmes.

Biology

Course Aims

This course will equip you with the knowledge and practical skills to study biology or a related subject at university.

Entry Requirements

You will require at least two 6 grades in science GCSEs (or minimum 665 including biology at 6 if separate sciences studied) plus grade 6 in mathematics, in addition to the general entry requirements for A levels.

Course Content

Unit 1 - Development of practical skills in Biology

Learners carry out practicals throughout the course and develop various skills which will then be examined.

Unit 2 - Foundations in Biology

Topics include biological molecules, cell structure and membranes, enzymes and cell division.

Unit 3 - Exchange and transport

Topics include the respiratory system, the cardiovascular system, plant structure and transport.

Unit 4 - Biodiversity, evolution and disease

Topics include disease prevention and the immune system, biodiversity, classification and evolution.

Unit 5 - Communication, homeostasis and energy

Topics include the nervous system, the kidney and liver, respiration, photosynthesis and muscles.

Unit 6 - Genetics, evolution and ecosystems

Topics include cellular control, inheritance, biotechnology, cloning, genetic engineering and sustainability.

Course Assessment

Written examinations. Learners will additionally complete a practical endorsement which does not contribute to their overall grade and is pass/fail.

Materials

Recommended textbooks and Internet sites to be advised by your tutor. All learners will be able to borrow a textbook from the library and all practical equipment will be provided. You will need to buy a scientific calculator.

Progress

Higher Education to study biology, medicine, dentistry, veterinary and other related science courses.



Business

Course Aims

This course encourages learners to develop an enthusiasm for studying business and gain a holistic understanding of business in a range of contexts. Learners will develop a critical understanding of organisations and their ability to meet society's needs and wants. There will also be opportunities to generate enterprising and creative approaches to business opportunities, problems and issues. There will be a focus on investigating different types and sizes of organisations, drawing on local, national and global contexts.

Entry Requirements

You will require a grade 5 in mathematics and grade 5 in English language, in addition to the general entry requirements.

Course Content

Component 1- Business opportunities and functions

This component focuses on new business start-ups and small to medium sized enterprises (SMEs). The content in this section is based around the concept of starting a new business and the issues that surround the process of planning a new business. In addition to covering the main concepts of setting up a new business, learners should be aware of other types of business organisations, the markets in which they operate and their various stakeholders. Learners need to understand that, in order to succeed in a competitive market, all businesses have to consider the core functions of business (these topics are introduced in the first year of the subject).

Component 2- Business analysis and strategy

This component builds on the theory introduced in Component 1. As the title suggests, the emphasis in this component is on understanding and using analytical techniques and developing appropriate business strategies. Learners need to understand, construct and analyse a range of decision-making models and investment

appraisal methods used by businesses to decide on their strategy. Learners need to develop analytical skills to investigate business opportunities and problems in a number of different contexts and evaluate a range of quantitative and qualitative data to suggest possible strategic responses from businesses.

Component 3 – Business in a changing world

This component focuses on how businesses adapt to succeed in a dynamic external environment. Learners need to understand that the business world never stands still and there are continuous opportunities and threats to business of all sizes. In addition to this learners need to understand that regardless of size, business now operate in a global marketplace and they need to consider a wide range of external factors that affect their day-to-day activities, decision-making and strategy. Learners are required to integrate the knowledge, understanding and skills developed in all three components to display a holistic understanding of business activity and the environment in which they operate.

Course Assessment

Written examinations.

Materials

You are provided with textbooks. However, you are required to provide all other materials.

Progress

Higher Education to study business-orientated programmes to include accountancy, enterprise, business and management.



Chemistry

Course Aims

This course will provide you with the knowledge and understanding of facts, principles and concepts from different areas of chemistry.

Entry Requirements

You must have two GCSE 6 grades in double award science (or 666 in triple award). Your mathematics GCSE must be grade 6 or higher and you must have a grade 5 in English language, in addition to the general entry requirements.

Course Content

Physical & Inorganic Chemistry: Paper 1

Topics include physical chemistry such as amount of substance, kinetics, thermodynamics, equilibria, electrode potentials and acids and bases. Inorganic chemistry topics include alkaline earth metals, halogens, period 3 elements, transition elements and reactions of ions in aqueous solution. Relevant practical skills from a range of board specified experiments have to be done over the two years of A level. Paper 1 is worth 35% of the A level course.

Physical & Organic Chemistry: Paper 2

Topics include all physical chemistry rate equations. All organic chemistry such as alkanes and alkenes, organic analysis, carbonyl compounds, aromatics, amines, polymers, amino acids, proteins and DNA and NMR spectroscopy. Relevant practical skills from a range of board-specified experiments have to be done over the two years of A level. Paper 2 is worth 35% of the A level course.

Physical & Inorganic Chemistry: Paper 3

Topics can be from ANY content and from ANY practical skills. Paper 3 is worth 30% of the total A level course.

Course Assessment

A level chemistry is assessed via three written exams, paper one, paper two and paper three, each two hours long.

Materials

You will be given details of recommended textbooks at the start of the course. One textbook will be loaned to you by the library for the whole year. Laboratory coats and safety glasses will be provided. You will need to buy a scientific calculator and basic stationery such as A4 lined paper, ring binders, dividers and plastic wallets.

Progress

Many learners who study A level chemistry will go onto Higher Education. Many science-based degrees such as biomedical science, forensic science, environmental science, pharmacy and other medical sciences, material science and many more require chemistry as an essential part of the entry requirement.



Computer Science

Course Aims

This course has been designed for learners who wish to go on to Higher Education courses or employment, where knowledge of computer science would be beneficial.

Entry Requirements

You will require a grade 6 or higher in mathematics, in addition to the general entry requirements.

Course Content

Year 1

- Programming (using Python)
- Data structures
- Algorithms
- Computation
- Data representation
- Computer systems
- Computer architecture
- Consequences of computing
- Networking

Year 2

- Object oriented programming
- Advanced data structure
- Algorithms
- Internet
- Databases
- Big data
- Functional programming
- Practical project

Course Assessment

Examinations and coursework.

Materials

You are provided with textbooks. However, you are required to provide all other materials.

Progress

Higher Education or employment.



Criminology (Applied)

Course Aims

Criminology is the scientific study of crime, criminals and the criminal justice system. An understanding of criminology is relevant to many job roles within the criminal justice system and social and probation work. It also has relevance for those students seeking to progress into higher education in subjects such as sociology and psychology. Students targeting specific destination universities should check their admission policies before taking this subject.

Entry Requirements

You will require two grade 6 and three grade 5, to include English Language

Course Content

There will be mandatory and optional units over this two year course, which may include:

- Changing Awareness of Crime
- Criminological Theories
- Crime Scene to Courtroom
- Crime and Punishment

Course Assessment

You will be internally assessed through in class controlled assessments as well as externally set exams over the two years.

Materials

Recommended textbooks to be advised by your tutor. Extensive use will be made of the Internet and relevant websites will be an important source of material to study this course.

Progress

Higher Education or employment.

Economics

Course Aims

To provide a good basis for further study of economics or business studies.

Entry Requirements

You will require a grade 6 or higher in mathematics and English, in addition to the general entry requirements.

Course Content

The operation of markets and market failure

Topics include:

- The nature of economic activity covering production of goods and services
- Economic resources and the objectives of individual firms and governments
- The determinants of demand for goods and services and price and income elasticity
- The interrelationships between markets and how markets affect resource allocation
- Division of labour, adding value and output
- Market failure and reasons for government intervention.

The national economy in a global context

Topics include:

- Macroeconomic indicators and the economic cycle
- How demand affects the circular flow of income and price levels
- The determinants of demand and supply
- The objectives of government economic policies and how governments work towards economic growth
- How inflation and deflation affect the economy and the impact of demand-pull and cost-push inflation
- Macroeconomic policies including fiscal policy, monetary policy and supply-side policies.

Individuals, firms, markets and market failure

Topics include:

- The objectives of firms and divorce of ownership from control

- The law of diminishing returns and impact of economies and diseconomies of scale
- The impact of technological change on the structure of markets and the impact on business practices
- The concept of monopoly and oligopoly and the impact on firms and demand/supply within a market
- The demand and influences on the labour markets
- The impact of wage restrictions and legislation on the economy
- Public ownership, privatisation and regulation and deregulation of markets.

The national and international economy

Topics include:

- The causes of change in the various phases in the economic cycle
- The use and limitations of national income and how unemployment impacts on the economy
- The impact of inflation and deflation on the economy and business
- The role and regulation of financial markets
- The impact of fiscal policies and supply-side policies and how the government attempts to manage the economic situation
- The impact of exchange rate policies and globalisation
- The issue of free trade and the impact of the WTO on business activities
- The concept of the balance of payments and how deficits impact on the economy.

Course Assessment

You will be assessed by a series of external examinations.

Materials

You are provided with textbooks. However, you are required to provide all other materials.

Progress

Higher Education to study business, economics and management or employment.

English Language

Course Aims

This course provides opportunities for learners to develop their appreciation of different areas of language study, both spoken and written. You will explore a wide range of texts to improve your skills in using language, applying analytical frameworks and learning more about how English works in a variety of contexts.

Entry Requirements

You will require grade 6 in preferably English Language and English Literature, or combined English in addition to the general entry requirements.

Course Content

Language and the individual

This aims to introduce learners to language study, exploring textual variety. This area of study introduces learners to methods of language analysis to explore concepts of audience, purpose, genre, mode and representation.

Language varieties

This aims to allow learners to explore language variety. Learners will study the key concepts of audience, purpose, genre and mode and will explore language in its wider social and geographical contexts. Learners will study varieties of English within the British Isles. This also requires learners to study social attitudes to, and debates about, language diversity.

Language, the individual and society

This aims to introduce learners to language study, exploring textual variety and children's language development. This area of study introduces learners to methods of language analysis to explore concepts of audience, purpose, genre, mode and representation. It also introduces learners to the study of children's language development, exploring how children learn language and how they are able to understand and express themselves through language.

Language diversity and change

This aims to allow learners to explore language diversity and change over time. Learners will study the key concepts of audience, purpose, genre and mode and will explore language in its wider social, geographical and temporal contexts. They will explore processes of language change. This part of the subject content also requires learners to study social attitudes to, and debates about, language diversity and change.

Language in action

This aims to allow learners to explore and analyse language data independently and develop and reflect upon their own writing expertise.

It requires learners to carry out two different kinds of individual research:

- A language investigation (2,000 words excluding data)
- A piece of original writing and commentary (750 words each).

Learners can choose to pursue a study of spoken, written or multimodal data, or a mixture of text types, demonstrating knowledge in areas of individual interest.

Course Assessment

You will be assessed by examinations and coursework.

Materials

These will be supplied by the tutor.

Progress

Higher Education or employment. English Language combines well with other subjects in relation to university courses as well as being valued by employers. Career options: English as a subject can lead to a variety of career pathways including teaching, journalism, business, management and law.

English Literature

Course Aims

This course encourages learners to develop as critical, autonomous readers with the skills to analyse and evaluate texts from different times and genres. Learners will be expected to read widely and make contributions to class discussion of texts.

Entry Requirements

You will require grade 6 in both English Language and English Literature, or combined English in addition to the general entry requirements.

Course Content

Over the two years of the course you will study the work of selected poets from both pre-1900 and post-1900. Along with the study of prose fiction novels taken from pre-and-post 2000. Drama texts will include Jacobean and modern 20th century drama, along with extracts from a wide variety of prose fiction and poetry.

Course Assessment

A combination of examination and coursework.

Materials

Dudley Sixth will supply all set texts although learners may choose to purchase their own copies.

Progress

Higher Education or university. An English A level is valued by universities and employers. Career options: English can lead to a variety of careers. The skills it develops can lead to teaching, journalism, business, management and information services e.g. librarianship.



Environmental Science

Course Aims

This course will equip you with the knowledge and understanding to study the environment around us in a scientific context.

Entry Requirement

You will require a grade 6 in science and mathematics and a grade 5 in English, in addition to the general entry requirements.

Course Content

The living environment

Topics include the conditions for life on Earth, biodiversity, conservation of wildlife on a global scale, conservation of environments in the UK, coral reefs, Antarctica and tropical rainforests. Learners will investigate the legal and ethical issues surrounding the conservation and protection of these environments plus some of the conflicts which occur. The management of ecological relationships between organisms and their abiotic (non-living) and biotic (living) environments is also considered. Food webs, predator and prey relationships plus competition between species is analysed, and skills in the practical evaluation of data relating to changes in environments are also studied.

The physical environment

Topics include the atmosphere including its structure and characteristics, global climate change, ozone depletion and the El Nino effect, the impacts of humans on atmospheric processes and the hydrosphere, including the hydrological cycle and the impacts humans have on this natural system. The lithosphere is also studied such as rocks and soil, including the formation of different rock types and the development of soils in the environment. Practical work in soil analysis is undertaken in the laboratory and skills in evaluating the results of experiments are developed. Learners will also investigate the exploitation and management of the physical environment in areas such as mining, water abstraction, and the natural nutrient cycles such as carbon, nitrogen and phosphorous. The concept of sustainability will be explored in relation to the physical environment.

Energy resources and environmental pollution

This unit involves studying the current and future problems of energy supply and how these may be resolved. Non-renewable and renewable energy resources are studied with regard to both contemporary and proposed usage and the impact this has on the environment. New developments in energy resources such as the use of hydrogen, wind power and biofuels will be covered, alongside the more 'traditional' energy resources. Pollution and the properties of pollutants are investigated to explain causes of environmental damage. Different forms of pollution are studied, including atmospheric, aquatic, radioactive, noise and terrestrial pollutants such as waste disposal. Strategies to minimise impacts and manage damage from these pollutants are also investigated.

Biological resources and sustainability

The growth of human population and increased materialism are considered in relation to demands placed on the planet's resources. Food production and nutrition are studied, alongside specific agro ecosystems. Forestry systems are analysed in terms of types of forests, resources, production and deforestation. How these might be managed are also investigated. Aquatic food production systems including ocean fish stocks and commercial fish farming are studied with consideration of the future issues relating to management of aquatic food production systems. Sustainability of human lifestyles allows synoptic consideration of all module.

Course Assessment

Written examinations and practical fieldwork.

Materials

Recommended textbooks to be advised by your tutor. Extensive use will be made of the Internet and relevant websites will be an important source of material to study this course.

Progress

Higher Education to study earth sciences, teaching or surveying. Employment with environmental agencies, conservation agencies, energy sectors, environmental health officer, flood management and health & safety.

Extended Project Qualification (EPQ)

Course Aims

This stand-alone qualification will provide you with an exciting opportunity to research a topic of your choice. The project title may develop from a previous subject you have studied or an area of personal interest outside of your studies.

Entry Requirements

In addition to the general entry requirements you will also need a strong GCSE profile and entry on to the course is at the discretion of the interviewing tutor.

Course Content

These will include the necessary skills required for completing your project:

- Project management
- Research methodology
- Ethical guidelines
- Report writing
- Critical thinking.

For the remaining part of the course you will be required to work independently with regular supervision.

Course Assessment

You will be assessed on the following coursework components:

- Project product, in the form of a research report, production or artefact
- Completed production log
- Presentation.

Materials

Recommended textbooks to be advised by your tutor. Extensive use will be made of the Internet, relevant websites and journals.

Progress

Higher Education or employment.



Film Studies

Course Aims

For this specification, these underpinning elements have been used to create a framework for studying film, which learners will be able to apply to all the films they explore:

1. The key elements of film form – cinematography, mise en scène, editing, sound and performance
2. The structural elements of film form – narrative and genre
3. How film creates meaning and generates response, including how it functions as a medium of representation
4. Film as an aesthetic medium
5. The spectator and spectatorship
6. The social, cultural, political, historical and institutional, including production, contexts of film
7. Critical approaches to studying film
8. Key debates and filmmakers' theories of film.

Entry Requirements

You will require a grade 6 in English and a keen interest in films, in addition to the general entry requirements.

Course Content

Component 1 - American film

This component compares two mainstream Hollywood films and introduces learners to US indie films. The comparative study will be focused on the core areas of study, foregrounding a comparison of contexts – how contexts are reflected in film, how knowledge of contexts increases understanding and how films generate meanings and responses. Learners will thus explore the relationship between contexts and films through considering key elements of film (cinematography, mise en scène, editing and sound), the structural elements of film (narrative

construction and where relevant, genre), aesthetics and representation issues. For the US indie film, spectatorship issues will also be covered.

Component 2: European film

Moving away from the dominance of Hollywood cinema, this component takes an in-depth look at two British films and one non-English language European film. Again the key and structural elements of the films will be covered, as well as contextual issues and narrative (British films only).

Component 3 - Production

The production may take the form of either a short film or a screenplay for a short film. The screenplay must be accompanied by a digitally-photographed storyboard of a key sequence from the screenplay in order to demonstrate how the screenplay will be realised. Learners must also provide an evaluative analysis of the production, which analyses and evaluates the production in relation to other professionally-produced films or screenplays.

Course Assessment

Written examinations and coursework.

Materials

Recommended textbooks to be advised by your tutor. Access to DVD and video player. Extensive use will be made of the Internet and relevant websites will be an important source of material to study this course.

Progress

Higher Education for most courses, especially film, media and journalism. Career progression to film and media production, teaching and journalism.

Fine Art

Course Aims

On this course learners explore a range of fine art media, techniques and processes through traditional and modern approaches. They develop ideas for painting, prints and sculptures in response to contemporary and historical examples.

Entry Requirements

There are two pathways onto the fine art A Level:

Option one

Grade 6 in an art and design based subject or distinction at BTEC Level 2. Applicants will also require a portfolio when attending interview.

Option two

Applicants may be accepted without an art and design based GCSE or BTEC by providing a strong portfolio of relevant practical work at interview.

Course Content

Year One

A skill-building year where learners will have the opportunity to explore new materials and progress through various short projects. These skills will provide learners with a strong basis to build on in the second year. There is no formal exam in the first year, but ongoing assessment throughout.

Year Two

Component 1 - Personal investigation

In this unit there is a written component in which candidates develop a personal investigation based on an idea, issue, concept or theme leading to a finished piece or pieces. Learners pick a theme or idea and produce a range of work based on this, showing their critical thinking skills

and ability to research in depth. Accompanying text supports the practical work and explains the learners thought process which must be no less than 1000 and no more than 3000 words.

Component 2 - Externally-set assignment

Learners are provided with eight topics/questions from which they choose one to study. The summative exam is 15 hours long and learners are expected to create a clearly-defined section of work that makes up a whole, leading to a finished piece or pieces.

This course gives you the opportunity to broaden your skills in this area, experience new artists/designers and visit new galleries.

Course Assessment

Dudley Sixth staff grade these units before the marks are externally-verified.

Materials

Extensive use will be made of the Internet and relevant websites will be an important source of material to study this course. Most paper, paint and other media and materials are provided by Dudley Sixth but learners should have a basic kit for independent study (Tutor to advise).

Progress

BTEC Foundation Diploma in art and design, HND/Foundation Degrees in fine art or teacher training qualifications. Career options include illustrator, fine artist, museum curator, multiple design areas and any jobs that require evidence of creative thinking skills.

French

Course Aims

An in-depth study of a modern language at advanced level, including the major skills of writing, listening, reading and speaking. Other aims:

- To develop awareness of various aspects of the societies where French is spoken
- To develop a high level of communication skills and competence in French
- To extend learners intellectually and develop their general study skills
- To prepare learners for the use of French at work, further study or leisure.

Entry Requirements

You will require a grade 6 in French, in addition to the general entry requirements.

Course Content

Unit 1 - Listening, reading and writing

Unit 2 - Writing about a cultural topic

Unit 3 - Speaking

Topics for all units:

- Current trends in French-speaking society
- Current issues in French-speaking society
- Artistic culture in the French-speaking world
- Aspects of political life in the French-speaking world
- Grammar
- One text and one film, or two texts from the list set in the specification.

Course Assessment

Written and oral examinations.

Materials

To be provided by Dudley Sixth.

Progress

Higher Education.



Geography

Course Aims

This course will develop your understanding of physical and human geography, challenge your perceptions and stimulate your investigative and analytical skills. The course topics reflect key issues in the world today.

Entry Requirements

You will require a grade 6 in English, 6 in a humanities subject and 5 in mathematics in addition to the general entry requirements.

Course Content

Physical Geography

- Water and carbon cycles: the dynamic and cyclical relationships associated with water and carbon
- Hot desert environments and their margins: the characteristics of dry lands occurring at all latitudes
- Coastal systems and landscapes: how the interaction of winds, waves currents and sediments develop the dynamic environments of the coastal zone
- Hazards: focuses on the lithosphere and the atmosphere which present hazards to human populations
- Ecosystems under stress: focuses on the nature and functioning of ecosystems and their relationship with human activities
- Cold environments: the distinctive physical processes and landscapes associated with cold environments and the challenges and opportunities they present for human development.

Human Geography

- Global systems and global governance: the process of globalisation and the governance of different parts of the planet including Antarctica

- Places: the experience and characteristics of specific places and people's engagement with them
- Contemporary urban environments: focuses on how urban areas grow, change and why they present significant environmental and social challenges for human populations
- Population and the environment: explores the relationship between population, economic development, the role of the natural environment and the population's health and well-being
- Resource security: the exploitation and development of unevenly distributed resources of water and energy.

Geographical investigation (20% of final grade)

You are required to undertake an independent fieldwork investigation in relation to processes in both physical and human geography. This will be assessed as a written fieldwork report. Your geographical skills in using statistical tests, maps, and presenting and interpreting data in a variety of graphical forms will also be developed.

Course Assessment

Written examinations and coursework.

Materials

Dudley Sixth provides textbooks and equipment for fieldwork. Compulsory attendance on fieldwork is required with a contribution from the learner (financial assistance may be available from Dudley Sixth).

Progress

Higher Education to study earth sciences, teaching or surveying. Employment with environmental agencies and conservation bodies.

Geology

Course Aims

The study of rocks and earth processes, geology will complement other A levels if you are already studying science/earth sciences.

Entry Requirements

You will require a grade 6 in science and grade 5 in mathematics, in addition to the general entry requirements.

Course Content

Global tectonics

Topics include the planetary system, meteorites and the structure of the Earth, earthquakes and the forces which create them, plus the strategies developed to manage their impacts. Theories relating to continental drift and the Earth's magnetic field are covered along with the geological structures created by the Earth's movements such as folds and faults.

Rocks

Topics include the rock cycle, igneous, sedimentary and metamorphic rocks and how these different types of rocks are formed. The characteristics of different minerals contained in these rock groups are identified and the tests which can be used to distinguish between them. Ancient sedimentary environments are investigated to include the conditions which were prevalent and the diagnostic characteristics which enable them to be identified today.

Environmental geology

Topics include water supply and resources including aquifers and springs plus the concept of sustainable management of water, fossil fuel exploitation and problems relating to structures where these fossil fuels are found such as subsidence associated with coal mining. Metal mineral mining and the distribution of certain metals in the Earth's crust, engineering geology, to include dam construction, road building, coastal protection, and nuclear waste disposal are also covered.

Evolution of life, Earth and climate

Learners study the formation of fossils, fossil evidence of evolution, groups of important fossils such as corals, trilobites, ammonites and dinosaurs. Methods of dating rocks and identifying evidence of mass extinctions are also investigated alongside the evidence we see today for climate change in the Earth's past.

Practical skills

Learners undertake practical laboratory work alongside the theoretical concepts outlined above for units 4 and 5. Topics include the investigation of water flow through different rocks, simulation of fossil preservation and the chemical testing of different metals in relation to groundwater.

Practical skills

Learners undertake practical laboratory work alongside the theoretical concepts outlined above. Topics include the investigation of water flow through different rocks, simulation of fossil preservation and the chemical testing of different metals in relation to groundwater. The testing of rocks and minerals, the simulation of earthquakes and investigating the impacts of meteorites.

Course Assessment

Written examinations, practical assessments and field work.

Materials

Recommended textbooks will be advised by your tutor. Use of the Internet and relevant websites will be part of the course. Some fieldwork will be undertaken which will involve a small transport cost.

Progress

Higher Education in science or earth sciences, teaching, working with environmental agencies, resource extraction companies and environmental management.

German

Course Aims

An in-depth study of a modern language at advanced level, including the major skills of writing, listening, reading and speaking. Other aims:

- To develop awareness of various aspects of the societies where German is spoken
- To develop a high level of communication skills and competence in German
- To extend learners intellectually and develop their general study skills
- To prepare learners for the use of German in work, further study or leisure.

Entry Requirements

You will require a grade 6 in German, in addition to the general entry requirements.

Course Content

Spoken expression, response, understanding and written response in German and research,

- Youth culture and concerns
- Lifestyle: health and fitness
- The world around us: travel, tourism, environmental issues and the German speaking world
- Education and employment
- Customs, religions, beliefs and traditions
- National and international events: past, present and future
- Literature and the arts.

Course Assessment

- Units 1 - 3: speaking, listening, reading and writing exams
- Unit 4: translation, essay and research work.

Materials

To be provided by Dudley Sixth.

Progress

Higher Education.





Graphic Design

Course Aims

This course aims to introduce you to a variety of experiences exploring a range of graphic design techniques and processes.

Entry Requirements

There are two pathways onto the graphic design A Level:

Option one

Grade 6 in an art and design based subject or distinction at BTEC Level 2. Applicants will also require a portfolio when attending interview.

Option two

Applicants may be accepted without an art and design based GCSE or BTEC by providing a strong portfolio of relevant practical work at interview.

Course Content

Development year

Practical coursework which will include research and the developmental stages of your work through to your final designs. You will explore two and three dimensional aspects of graphic design.

Externally-set assignment: You will be given four weeks to produce your preparatory work for this exam.

Component 1

Personal investigation which will include practical coursework, research and the developmental stages of your ideas and concepts through to your final designs. You will explore two and three dimensional aspects of graphic design.

Component 2

Exam which usually lasts 15 hours. This will be spread over two days. You will be given eight weeks to produce your preparatory work for this exam.

Course Assessment

You will be assessed by coursework, practical projects and exams.

Materials

A set of basic materials will be supplied by Dudley Sixth, although you will be expected to add to this set during the course of your studies. Sketchbook and memory stick required.

Progress

Higher Education in areas such as graphic design, visual communication, illustration, games design, multi-media design and fine art.



History

Course Aims

This course will develop your knowledge and understanding of modern British and European history, and help you to acquire the skills of a historian.

Entry Requirements

You will require a grade 6 in English and a grade 6 in history, in addition to the general entry requirements.

Course Content

Unit 1

This unit is a breadth study covering British history 1783-1885. We will focus on the profound economic, social and political changes which occurred during this period, as Britain transformed into the first modern industrialised nation in the world.

Unit 2

This unit is a depth study which looks in detail at German history between 1918 and 1945. We will look at the Weimar Republic and the economic, social and political conditions which paved the way for Hitler to take control in Germany. We will then investigate the impact of Nazism on Germany and upon key groups in society.

Unit 3

This unit is a historical investigation, which provides an opportunity for learners to research twentieth century Russia and present their findings in the form of a written assignment.

Course Assessment

Written examinations and coursework.

Materials

A number of basic textbooks cover the syllabus and these will be discussed at the first class meeting. Dudley Sixth has access to an extensive library collection of history texts and use will also be made of Internet sources.

Progress

Higher Education, or a career in teaching, museum work, the public services, business, commerce or journalism.



ICT (BTEC)

Course Aims

Learners will explore and develop a range of ICT skills particularly useful in the workplace. It is a vocational course so the focus is on producing a practical application whilst being backed up with theory.

Entry Requirements

Grade 5 in English and mathematics in addition to general entry requirements or BTEC level 2 Diploma in ICT.

Course Content

Year One

Databases

Learners need to create a relational database from a given scenario. They will normalise the data to create a structure, implement, test and evaluate a database. This is an externally assessed unit taken over ten hours in a one week period.

Social media

This unit looks at how businesses can use social media to promote their products and services. Learners will look at both positive and negatives of businesses using social media and the most appropriate sites to be used based on their target audience. Learners will develop, post and monitor several social media sites. They will use tools available on the internet to optimise their posts in order to improve the traffic to them. The unit is assessed by coursework.

Year Two

Spreadsheets

This unit explores how complex spreadsheets can support decision making in organisations by showing the consequences of alternative choices before they are actually made. You will find out how to design, develop and test a spreadsheet before responding to user feedback to improve it. This unit is assessed by coursework.

Hardware and software

This unit looks at how Hardware and Software interact with each other to form an IT system. Learners will also look at the relationship between users and systems and the decisions that businesses and individuals need to make. Learners will explore issues related to IT and their impact on businesses and individuals. Assessment is a 2 hour written examination.

Course Assessment

External assessment, examination and coursework.

Materials

Recommended textbooks advised by your tutor. Extensive use of the internet and relevant websites will be an important source of material for this course.

Progress

Higher Education or employment.

Law

Course Aims

To provide you with a broad appreciation and a general concept of law and its functions within society in the United Kingdom. The study of A level law will also develop your analytical, creative thinking and evaluative skills.

Entry Requirements

You will require a grade 6 in English Language or Literature and in another humanities subject (e.g. history), in addition to the general entry requirements.

Course Content

Component 1 - The legal system and criminal law

- Section A: The Legal System
This section focuses on the civil and criminal courts, the legal professions and access to justice. You will develop knowledge and understanding of the processes and people involved in the law and the changing nature of the legal system.
- Section B: Criminal Law
This section focuses on the rules and general elements of criminal law and provides an introduction to criminal liability through the study of offences against the person and offences against property. You will develop your knowledge and understanding of criminal law and the skills to apply your legal knowledge to scenario-based situations. Your evaluative skills will be developed by being able to demonstrate a critical awareness of the present state of criminal law.

Component 2 – Law making and the Law of Tort

- Section A: Law making
This section focuses on law making and law reform in England and Wales as well as the European Union. You will study law making methods and their underpinning concepts. You will develop an understanding of legal method and reasoning as used by lawyers and the judiciary. Topics covered include Parliamentary Law making, Judicial Precedent, Delegated Legislation, Statutory Interpretation and European Law as well as Law reform bodies.
- Section B: The Law of Tort
This section focuses on the rules of Tort liability in negligence, occupiers' liability and remedies. It provides an introduction to civil liability. You will develop knowledge and understanding of the Law of Tort and the skills to apply your legal knowledge to scenario-based situations. Your evaluative skills will be developed by being able to demonstrate a critical awareness of the present state of the Law of Tort.



Component 3 – Further Law

- Section A: The nature of Law
This compulsory section focuses on the nature of law. You will explore the nature of law in a wider context and develop your understanding of how the law interacts with society, technology, morality and justice. You will be expected to bring together the different areas of knowledge and understanding of the English legal system and the nature of law, legal rules and principles, concepts and issues from across the full course of study.
- Section B: The Law of contract
This option focuses on the central elements of contract law from the formation of contracts to their enforcement. You will develop knowledge and understanding of the law of contract, the skills to apply your legal knowledge to scenario-based situations. Your evaluative skills will be developed by being able to demonstrate a critical awareness of the present state of the law of contract.

Course Assessment

Two-hour written examination in each of the three components.

Materials

Recommended textbooks to be advised by your tutor. Extensive use will be made of the Internet and relevant websites will be an important source of material to study this course.

Progress

Higher Education to study for a law degree or a range of humanities degrees. Legal career as a solicitor, barrister, or part of the probation service, court services, or police.



Mathematics

Course Aims

To provide a good basis for business, science, computing or engineering.

Entry Requirements

You will require a grade 6 in mathematics at higher level, in addition to the general entry requirements.

Course Content

Year One

- Proof
- Algebra and functions
- Coordinate geometry
- Sequences and series
- Trigonometry
- Exponentials and logarithms
- Differentiation
- Integration
- Vectors
- Statistical sampling
- Data presentation and interpretation
- Probability
- Statistical distributions
- Statistical hypothesis testing
- Quantities and units in mechanics, kinematics, forces and Newton's Laws.

Further Mathematics
is also available if you
have a grade 8 in
GCSE mathematics.

Year Two

All of the year one topics plus numerical methods and moments.

Course Assessment

You will be assessed by a series of external examinations.

Materials

Dudley Sixth will loan the recommended textbooks. Scientific calculators are required.

Progress

Higher Education or employment.



Media Studies

Course Aims

This course gives advanced-level training in all theoretical aspects of the media industry, as well as the analytical tools required to investigate media texts.

Entry Requirements

You will require a grade 6 in English language or literature and grade 5 in either a humanities or a creative arts subject. Learners must have a keen interest in all media forms (TV, magazines, radio, newspapers, online, advertising etc.)

Course Content

Component 1 - Investigating media language and representation

This component introduces learners to key aspects of the theoretical framework - media language and representation - as an essential basis for analysing media products from a range of forms. Theoretical approaches and theories will be used to inform and support analysis of media products. Learners will consider the influence of key aspects of social, cultural, historical and industry contexts on media products, as well as how audiences may respond to and interpret media products. Learners will develop their ability to use relevant subject-specific terminology in this component.

Component 2 - Investigating media forms and products

Learners will explore three media forms (television, magazines and blogs) through close analysis of the set products, investigating their use of media language and their presentations they offer in relation to relevant social, cultural, economic, political and historical contexts. Learners will also study media products in relation to the media industries in which they are produced, as well as considering the way in which audiences are targeted by

media producers and the way in which they interpret and interact with the media. Relevant theories will inform study of the set products.

Component 3 - Media production

This component synthesises learning from the areas previously studied, providing learners with the opportunity to show their knowledge and understanding in a practical way. In components 1 and 2, learners gain a detailed understanding of the theoretical framework in relation to a range of media forms. In this component, learners are required to apply their knowledge and understanding of media language, representation, media industries and audiences in an individual media production for an intended audience, based on one media form in response to a choice of briefs set by the exam board.

Course Assessment

Written exam and practical coursework.

Materials

Recommended textbooks to be advised by your tutor. Extensive use will be made of the Internet and relevant websites will be an important source of material to study this course.

Progress

Higher Education. Career options include broadcast or print journalism, animation, marketing and event management.

Philosophy

Course Aims

The course allows learners to critically-reason, develop arguments and gain a thorough knowledge of key philosophical concepts. You will also learn the key academic skills of critical thought and the ability to develop and sustain your own arguments.

Entry Requirements

You will require a grade 6 in English and a grade 6 in another humanities based subject.

Course Content

Year One

Unit 1 - Epistemology

What is knowledge? How can you be sure what you know? Learners will examine the ways in which humans gain understanding of the world and whether their senses are trustworthy.

Unit 2 - Ethics

How should we behave? You will examine several ethical systems that tell us how to be good people. You will also analyse whether the whole idea of 'being good' really exists.

Year Two

Unit 3 - Metaphysics of God

You will analyse why the concept of God is so important to human understating of the world and how we exist. Even atheists can't ignore God and have to create arguments to prove he doesn't exist!

Unit 4 - Metaphysics of the mind

You will tackle the most fundamental question: who are you? Are you the body you inhabit? Are you a mind? How do we define each of these things?



Course Assessment

There are two 3-hour exams at the end of the second year.

Materials

Textbooks will be advised by the course leader.

Progress

Philosophy has a range of attractive transferable skills that are attractive to many Higher Education courses and to employers in such careers as law, business, finance.

Photography

Course Aims

This is a skills-based course. You will study the theory, practice and history of the photographic medium. Analogue and digital imaging will form the basis of the course.

Entry Requirements

There are two pathways onto the photography A Level:

Option one

Grade 6 in an art and design based subject or distinction at BTEC Level 2. Applicants will also require a portfolio when attending interview.

Option two

Applicants may be accepted without an art and design based GCSE or BTEC by providing a strong portfolio of relevant practical work at interview.

Course Content

Learners are allowed to work in one or more area(s) of photography, such as those listed below. They may explore overlapping areas and combinations of areas:

- Portraiture
- Landscape photography
- Still life photography
- Documentary photography
- Photojournalism
- Fashion photography
- Experimental imagery
- Multimedia
- Photographic installation
- Moving image (video, film, animation).

Year One

A skill-building year where learners will have the opportunity to explore new materials and process through various short photographic projects. These skills will provide learners with a strong basis to build on in the second year.

There is no formal exam in the first year, but ongoing assessment throughout.

Year Two

Component 1 - Personal investigation

In this component practical work is accompanied with a written element in which candidates develop a personal investigation based on an idea, issue, concept or theme leading to a finished piece or pieces. Learners pick a theme or idea and produce a range of photography work based on this, showing their critical thinking skills and ability to research in depth. Accompanying text supports the practical work and explains the learners thought process which must be no less than 1000 words and no more than 3000.

Component 2 - Externally-set assignment

Learners are provided with eight topics/questions from which they choose one to study. The summative exam is 15 hours long and learners are expected to create a clearly defined section of work that makes up a whole, leading to a finished piece or pieces.

Course Assessment

You will be assessed by a mix of practical and written coursework and assignments. A practical examination is issued in February. There is one coursework module and one practical exam each year.

Materials

Photography books are available at the college and a sketchbook will not be required. You will need a USB memory stick larger than 8GB. You will be responsible for supplying your own film and printing paper if your project requires a large quantity. Dudley Sixth will supply chemicals and associated processing equipment.

Progress

Higher Education, employment, franchise and self-employment.

Physics

Course Aims

This course will provide you with knowledge and understanding of facts, principles and concepts from different areas of physics that are applied to real life situations.

Entry Requirements

You will require two 6 grades in double award or triple with a 6 in Physics, plus grade 6 in mathematics, in addition to the general entry requirements. Anyone not studying mathematics at A level must have a grade 7 or above in GCSE mathematics.

Course Content

Unit 1 - Particles, quantum phenomena and electricity

Topics include:

- Particles and radiation (atom, stable and unstable nuclei, classification of particles and their antiparticles, photons and particle interactions particles)
- Electromagnetic radiation and quantum phenomena (photoelectric effect, collisions of electrons with atoms, energy levels and photo-emission, wave-particle duality)
- Electricity (charge, current, potential difference, resistivity, direct current circuits, alternating currents and use of oscilloscopes).

Unit 2 - Mechanics, waves and materials

Topics include:

- Mechanical (scalars and vectors, moments, motion in a straight line, projectile motion, Newton's laws of motion, work energy and power and momentum)
- Waves (types of waves, refraction, superposition of waves, stationary, interference and diffraction)
- Materials (density, stress and strain, Hooke's Law and Young's Modulus).

Unit 3 - Fields and further mechanics

Topics include:

- Further mechanics (momentum, circular motion, simple harmonic systems, forced vibrations and resonance)
- Fields (gravitational, electric and magnetic).

Unit 4 - Nuclear and thermal physics

Topics include:

- Thermal physics (specific heat, ideal gas laws, internal energy and kinetic theory)
- Nuclear physics (radioactivity, nuclear instability, mass and energy, fusion and fission)
- Plus option from astrophysics, medical physics, applied physics, turning points in physics. A close reading of a specific philosophical text that incorporates all of the foregoing concepts and ideas.

Course Assessment

Written examinations. Learners will additionally complete the practical endorsement which does not contribute to their overall grade and is pass/fail.

Materials

Dudley Sixth will loan the required textbooks, but a scientific calculator is required.

Progress

Higher Education or employment. Medicine, environmental science, physics, engineering (mechanical and electrical).

Politics

Course Aims

This course will enable learners to develop a wide range of skills including the ability to comprehend, synthesise and interpret political information.

Entry Requirements

You will require a grade 6 in English and grade 5 in a humanities subject, in addition to the general entry requirements. An interest in current affairs and political systems is essential.

Course Content

Our AS and A level politics gives learners a varied insight and an in-depth foundation in UK and US governments, politics and political ideas.

Covering news and current affairs from the UK and US, it helps you understand how the UK country is run and develops research, written communication and debate skills. It also helps grow your confidence.

It's ideal if you're considering studying politics, sociology, ethics, advertising or journalism at university and is highly regarded by employers in industries including politics, international organisations, the media, government and the civil service.

Paper 1 - Government and politics of the UK:

- Democracy and Participation
- Elections and referendums
- Political parties
- Pressure groups
- EU
- Parliament
- Judiciary
- Constitution
- Devolution
- Prime minister and cabinet.

Paper 2 - Government and politics of the US and comparative politics:

- US constitution
- Separation of powers
- The President
- Political parties
- Federalism
- The election process.

Paper 3 - Political ideas – liberalism, socialism and conservatism and choice of one other.

Course Assessment

Written examinations.

Materials

You are provided with textbooks.

Progress

Higher Education to study a range of humanities degrees or employment in areas such as public services, journalism or local government.

Product Design

Course Aims

The specification has been designed to encourage candidates to take a broad view of design and technology, to develop their capacity to design and make products and to appreciate the complex relations between design, materials, manufacture and marketing.

Entry Requirements

You will require a grade 6 in mathematics and any one of the following subjects at grade B: science, product design, resistant materials or graphics, in addition to the general entry requirements.

Course Content

Unit 1 - Materials, components and application

Section A: Materials and components: natural woods, man-made boards, laminates and veneers, ferrous metals, non-ferrous metals, alloys, polymers, biodegradable polymers, elastomers, composites, compliant materials, smart materials, modern materials, product components and adhesives.

Section B: Design and market influences: Environmental/sustainability issues, ergonomics and anthropometrics, inclusive design and consumer safety.

Section C: Processes and manufacture: Fabrication methods, forming methods, redistribution methods, wasting processes, CAM processing, finishing materials and processes, Health and Safety and quality control.

Unit 2 - Learning through designing and making

This is a design-and-make unit where knowledge of the subject content is applied to the design and making of the candidates' own projects.

Unit 3 - Design and manufacture

- Section A: Materials and components
- Section B: Design and market influences
- Section C: Processes and manufacture.

Unit 4 - Design and making practice

This is a design-and-make unit where knowledge of the subject content is applied to the design and making of the candidates' own projects.

The 2nd Year NEA Design Project is a chance to design a client-based product which the student investigates a problem and designs and makes a prototype model. Where possible the materials will be provided but each student will need to work to a budget and contribute to additional costs if required.

Course Assessment

Exam and coursework.

Materials

Textbooks to be provided by Dudley Sixth.

Progress

Higher Education or employment.

Psychology

Course Aims

Psychology is the science that seeks to understand the reasons for thought and behaviour, and tries to do so by studying how the brain works along with other factors that might affect our actions, such as social or environmental influences. In doing this, Psychology also tries to work out which, if any, has the bigger influence on our actions – biology or environment? Of course, answers to these questions are needed when helping people with psychological disorders, educating our children, or helping to rehabilitate criminals.

Entry Requirements

You will require a grade 6 in any GCSE English and grade 5 in any Humanities subject, plus grade 5 in mathematics and grade 6 in science. If you have studied the Triple Award then you will require a grade 6 in biology, in addition to the general entry requirements. Learners should have an interest in reading about human behaviour but they should also be aware that there is a substantial amount of science (Biology) and research methodology involved in the course, as is the ability to write effective essays.

Course Content

Two papers reflecting the AS material (as outlined below) including additional material (e.g. Biopsychology), plus Paper 3 exploring the Issues and Options in Psychology.

Paper 1 - Introductory Topics in Psychology

Social Influence: this looks at how people can influence others, as with conformity and obedience for example.

Memory: this looks at different aspects of memory, for instance eye witness testimony and why we forget.

Attachment: this looks at how children form attachments and what happens when factors interfere with this process.

Paper 2 - Psychology in Context

Approaches in Psychology: this examines the basic approaches in Psychology, for example is behaviour learned, or is it the result of genetic or neurochemical processes?

Psychopathology: this examines how psychologists define abnormality, what causes it and how can it be treated.

Research Methods: this looks at the methods that psychologists use to collect data about people.

Paper 3 - Issues and Options in Psychology

Issues and Debates: addresses underlying themes in Psychology, such as the Nature - Nurture debate.

Gender: considers how do children learn their gender identity – is it the result of biological processes, or is it learned from others?

Schizophrenia: explores the explanations and possible treatments of schizophrenia.

Forensic Psychology: examines why people commit crime and how offenders should be treated.

Course Assessment

Written examinations.

Materials

Textbooks are available from the library. Information concerning other suitable textbooks will be provided by course tutors.

Progress

Higher Education or careers such as teaching or the helping professions. Psychology is also increasingly useful in the fields of business, sports and forensics.

Religious Studies

Course Aims

To provide an understanding of the philosophical and ethical foundations of religious belief.

Entry Requirements

You will require a grade 6 in English language and a grade 5 in a humanities subject (preferably R.E), in addition to the general entry requirements.

Course Content

Unit 1 - Philosophy of Religion

Topics include:

- Ancient philosophical influences
- The nature of the soul, mind and body
- Arguments about the existence or non-existence of God
- The nature and impact of religious experience
- The challenge for religious belief of the problem of evil
- Ideas about the nature of God
- Issues in religious language.

Unit 2 - Religion and ethics

Topics include:

- Normative ethical theories
- The application of ethical theory to two contemporary issues of importance
- Ethical language and thought
- Debates surrounding the significant idea of conscience
- Sexual ethics and the influence on ethical thought of developments in religious beliefs.

Unit 3 - Developments in religious thought

Topics include:

- Religious beliefs, values and teachings, their interconnections and how they vary historically and in the contemporary world
- Sources of religious wisdom and authority
- Practices which shape and express religious identity, and how these vary within a tradition
- Significant social and historical developments in theology and religious thought
- Key themes related to the relationship between religion and society in the context of Christianity.

Course Assessment

Written examinations.

Materials

OCR textbooks can be loaned from the library.

Progress

Higher Education, teaching and social work.



Sociology

Course Aims

To develop your theoretical understanding of sociological issues and research methods used by sociologists to gather information on human behaviour (e.g. educational achievement, religious beliefs, political ideology).

Entry Requirements

You will require a grade 6 or higher in English language and a grade 6 in a humanities subject. GCSE sociology is not a requirement but however if taken at GCSE it should be achieved at grade 6 or above.

Course Content

Year One

Unit 1 - Education with methods in context

Topics include:

- Sociological theories and research methods and their application to the study of different sociological issues
- Education including the difference in achievement between different social groups, sociological theories of education and changes in educational provision in the UK since the 19th century.

Unit 2 - Research methods and family and households

Topics include:

- The different sociological research methods, their strengths and limitations including practical, ethical and theoretical issues
- The family and households including sociological theories of the family, changes in divorce, marriage and cohabitation, changes in family structure, family diversity, single parenthood, single person households, the development of childhood, the change in roles of family members and social policies and their influence on the family.

Year Two

Unit 3 - Belief systems

Topics include:

- The different theories of religion and secularisation
- The difference in religious participation between men and women, different social classes, ethnic groups and ages
- The link between politics and religion
- Religion in a global context
- Religion vs. science.

Unit 4 - Theories and methods and crime and deviance

Topics include:

- Different sociological research methods, their strengths and limitations including practical, ethical and theoretical issues
- The different sociological theories and sociology as a science
- Crime and deviance including theories of crime, differences in criminal participation between men and women, social classes and ethnic groups and Global Crime
- Crime statistics and how they are constructed, the differences in levels and types of crime in different areas.

Course Assessment

Written examinations.

Materials

Recommended textbooks to be advised by the tutor.

Progress

Higher Education, work in teaching, probation, police, nursing, social work, human resources and research.

Sport & Physical Education

Course Aims

This course will equip you with the knowledge of a range of disciplines and practical skills to study physical education or a related subject at university.

Entry Requirements

You will require a grade 6 in GCSE PE (with greater emphasis on the theoretical component) and 6 in a science (preferably biology), in addition to the general entry requirements.

Course Content

Paper 1 - Factors affecting participation in physical activity and sport

Three sections:

- Section A: Applied anatomy and physiology
- Section B: Skill acquisition
- Section C: Sport and society.

Paper 2 - Factors affecting optimal performance in physical activity and sport

Three sections:

- Section A: Exercise physiology and biomechanics
- Section B: Sport psychology
- Section C: Sport and society and technology in sport.

Non-exam assessment - Practical performance in physical activity and sport

Learners assessed as a performer in the full sided version of one activity (subject to sporting activity list provided by the exam board).

Course Assessment

Written examinations, coursework and practicals.

Materials

Recommended textbooks to be advised by your tutor. These will be available from our library facilities.

Progress

To study Sports Science, Physiotherapy, Sport Rehabilitation, Sport Psychology or teaching.

Textile Design

Course Aims

To provide you with the skills and techniques to research and develop ideas to then create textile-based outcomes.

Entry Requirements

There are two pathways onto the textile design A Level:

Option one

Grade 6 in an art and design based subject or distinction at BTEC Level 2. Applicants will also require a portfolio when attending interview.

Option two

Applicants may be accepted without an art and design based GCSE or BTEC by providing a strong portfolio of relevant practical work at interview.

Course Content

Year One

A skill building year where learners will have the opportunity to explore new materials and process through project work. These skills will provide learners with a strong basis to build on in the second year.

There is no formal exam in the first year, but ongoing assessment throughout.

Year Two

Component 1 - Personal investigation

In this component there is a written component in which candidates develop a personal investigation based on an idea, issue, concept or theme leading to a finished piece or pieces. Learners pick a theme or idea and produce a range of art work based on this, showing their critical thinking skills and ability to research in depth. Accompanying text supports the practical work and explains the learner's thought process which must be no less than 1000 words and no more than 3000.

Component 2 - Externally-set assignment

Learners are provided with eight topics/questions from which they choose one to study. The summative exam is 15 hours long and learners are expected to create a clearly defined section of work that makes up a whole, leading to a finished piece or pieces.

This course gives you the opportunity to broaden your skills in this area, experience new artists and designers and visit new galleries.

Course Assessment

Practical observations, coursework and an externally-set assignment will form the assessments.

Materials

Some specialist textbooks and materials will be supplied by Dudley Sixth, but some fabrics and textile materials will need to be provided by the learner.

Progress

HND Fashion and Textiles or Higher Education: BA Hons at university. Employment in textiles design, manufacturing or fashion.

Our approach

When you choose Dudley Sixth, you're here because you want to be, not because you have to be. Our teaching staff are delighted about that and will naturally reward your maturity by treating you as an adult.

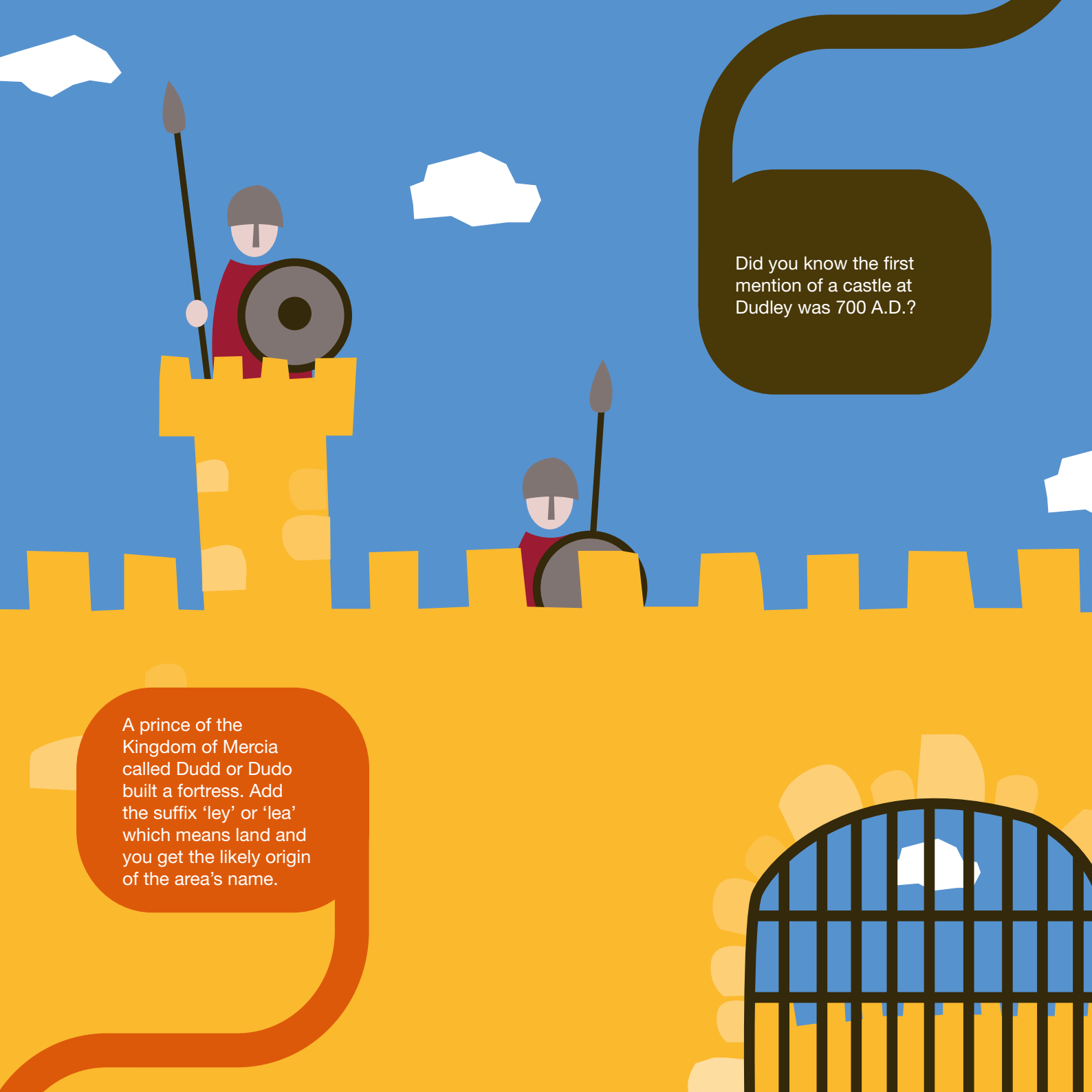
In return, we expect you to take responsibility for your learning, behaviour and attendance – and to show respect for the education you and your fellow learners are being offered by attending every lesson on time.

Dudley Sixth issues essential textbooks on extended loan to all learners but you will be expected to provide your own stationery. Naturally, teachers will expect you to be properly equipped for every lesson and to have done your homework!

All learners will be assessed at end of first year for satisfactory academic progress and conduct before being enrolled on to the second year.

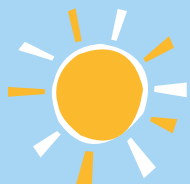


*Feel respected and
nurtured in a place
that is welcoming
to all.*



Did you know the first mention of a castle at Dudley was 700 A.D.?

A prince of the Kingdom of Mercia called Dudd or Dudo built a fortress. Add the suffix 'ley' or 'lea' which means land and you get the likely origin of the area's name.



Did you know juggling
has shown to change
the brain in as little as
seven days?



Studies indicate that
learning new things
helps the brain to
change very quickly.

Financial help

Studying at Dudley Sixth is free of charge, but if other costs are a barrier to you studying with us, we aim to help you to access financial support. Examples of support that could be available include:

Bursary Fund (16-18)

The bursary fund is a means tested support and is usually used for travel support. More information about the 16-18 Bursary can be found at the website:

www.direct.gov.uk/en/EducationAndLearning/
or call **01384 363 555**.

Care to Learn

Learners aged under 20 needing help with childcare may be eligible for help with costs. More information is available from **www.dfes.gov.uk/caretolearn** or call **0300 303 8610**.

Free meals

The government has introduced a new scheme to provide free meals for eligible learners in further education. The purpose of this new scheme is to enable learners who claim benefits or live with parents/guardians who claim benefits to access a healthy meal whilst at college without the cost becoming a burden. Call **01384 363 555** for more details.

Learner support fund

If you are 19 when you enrol, then help is available through the Learner Support Fund (19+) which provides means-tested grants to help learners aged 19+ with any additional costs of studying. Call **01384 363 555** for more details.

*Talk to us about
the support that
may be available.*

Free Bus Pass

If you are 16-18, and live more than 1 mile from Dudley Sixth, you will be eligible* for a free bus pass, as long as you are not already in receipt of other financial support.

*Learners with disabilities who are unable to access public transport may still be able to receive help.

Admissions

If you are interested in studying at Dudley Sixth in September, we urge you to register your interest immediately by completing the application online or through UCAS Progress.

A printed application can be posted out to you if preferred. For any questions regarding your application please call our Admissions Team on **01384 363 333**.

Disability

Dudley Sixth has an open and welcoming policy towards applicants and learners who may have a disability or learning difficulty.

We recognise the rights of all learners to be treated fairly and to have equal access to facilities and services.

Dudley Sixth has a range of specialist staff who encourage, support and enhance the educational experience of learners with disabilities and learning difficulties.

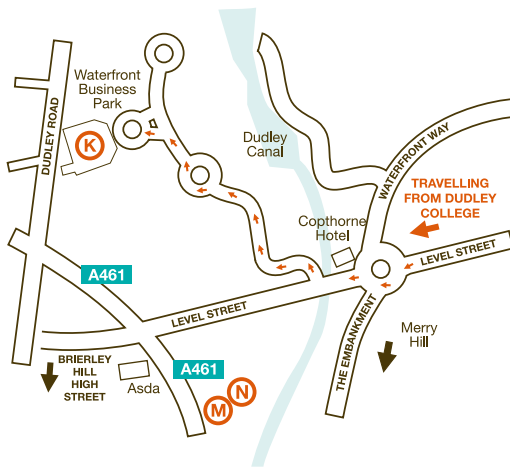
We are committed to quality improvement in the services we offer and have an on-going programme of development in order to widen participation.

We continuously review the effectiveness of our provision to meet the specific needs, interests and aspirations of all learners.

*Sign up soon:
September 2021
will be here before
you know it...*

How to find us

If you are a learner at Dudley Sixth you have access to all the great facilities in the Dudley Learning Quarter. Packed full of exciting technology and social spaces, the Dudley Learning Quarter provides you with the very best to inspire your learning, guarantee fun and ensure you achieve your goals.



- | | |
|--|----------|
| The Broadway - The Broadway, Dudley, DY1 4AS | A |
| Dudley Evolve - Tower Street, Dudley, DY1 1AF | B |
| Dudley Aspire - The Broadway, Dudley, DY1 4AR | C |
| Dudley Create - The Broadway, Dudley, DY1 4AR | D |
| Dudley Sixth - Ednam Road, Dudley, DY1 1HL | E |
| Priory Villa - Priory Road, Dudley, DY1 1HL | F |
| Dudley Enhance - Priory Road, Dudley, DY1 4AD | G |
| Manufacturing Technology - Priory Road, Dudley, DY1 4AD | H |
| Building Technologies - Priory Road, Dudley, DY1 4AD | I |
| Health Centre - Wolverhampton Street, Dudley, DY1 3AH | J |
| Training (CAT) Centre - Waterfront Way, DY5 1LX | K |
| Dudley Inspired - Venture Way, Brierley Hill DY5 1RG | M |
| Living Centre - Venture Way, Brierley Hill DY5 1RG | N |

Dudley Advance - Centre for Advanced Engineering and Manufacturing Technology, Priory Road, Dudley, DY1 4AD

Dudley Advance II - Centre for Advanced Building Technologies - Priory Road, Dudley, DY1 4AD

Motor Vehicle Centre - Wolverhampton Street, Dudley, DY1 3AH

Construction Apprenticeship Training (CAT) Centre - Waterfront Way, DY5 1LX

Dudley Inspired - Venture Way, Brierley Hill DY5 1RG

Independent Living Centre - Venture Way, Brierley Hill DY5 1RG

Open days

Saturday 17th October 2020 10.00am - 2.00pm

Saturday 16th January 2021 10.00am - 2.00pm

Saturday 13th March 2021 10.00am - 2.00pm

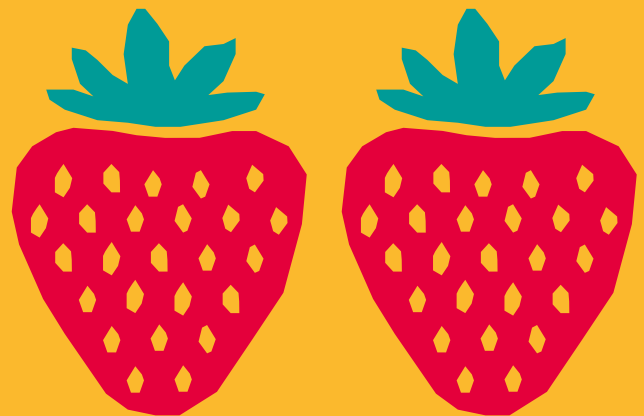
Wednesday 9th June 2021 4.00pm - 7.00pm



Did you know?

Lemons contain more
sugar than strawberries.

Provoking Thought



Terms and Conditions

DISABILITY STATEMENT

We have an open and welcoming policy towards all applicants and learners who may have a physical or learning difficulty, developmental disability or any mental health issues. We recognise the rights of all learners to have equal access to facilities and services, as well as to be treated fairly, regardless of disability or learning difficulty. We seek to encourage, support and enhance the experience of learners with disabilities. We are committed to continuous quality improvement and have an on-going programme of works in order to further improve access for people with disabilities. The college continuously reviews its provision for learners with disability or learning difficulties through its self-assessment processes. For further information please visit dudleycol.ac.uk or contact the Vice Principal, Curriculum & Standards on 01384 363 940.

NO SMOKING

Dudley Sixth supports the legislation which bans smoking in public places. It is an offence to smoke, including e-cigarettes on all college premises or grounds. Dudley Sixth supports a completely smoke-free and healthy environment.

Costs

FULL-TIME TUITION FEES

All college courses attract course fees, however full-time courses for 16-18 year olds are FREE as they are fully subsidised by The Education and Skills Funding Agency (ESFA). Learners aged 19+ are expected to pay tuition fees for these courses plus examination fees. Reduced fees are available for 19+ learners on income based benefits and for some programmes that meet Government priorities. Learners aged 19+ are expected to pay tuition fees for these courses. Advanced Learner Loans are available for learners aged 19 or above, studying a level 3 or 4 qualification. Please contact the advice and enrolment team on 01384 363 363 for further information. If you are retaking a subject(s) then you will, if you receive no further tuition, only be asked to pay the examination fees. Full-time 16-18 learners will not have to pay any costs involved with completing their qualification, however there may be some optional costs that we believe would add value to your education experience (e.g. specific equipment). Financial assistance may be available to help you with these optional costs. See specific course information for details.

DUDLEY SIXTH - PROTECTING YOUR PRIVACY AND PERSONAL DATA

Dudley Sixth is committed to protecting your privacy and personal data. We share information with you as to what data we collect, why we collect it and what we do with it, so you can be confident that your personal data is in safe hands. It will also let you know the rights you have, and the choices that you can make to ensure control over your personal data. Information that we collect from applicants and members of the public are:

- We collect your personal information when you enquire about, or apply for a course at Dudley Sixth either using our website or a paper application form, or through an external website such as UCAS. This will include your name, title, birth date, age and gender as well as contact details including address, email address and phone number, as well as information relevant to the course you have applied for.
- If you are required to attend an interview for a course we will take notes of any relevant information such as your interests, prior qualifications and working hours.
- Visitors to the college will be asked to register their name and car registration at reception.

For full details on our privacy policy please visit dudleycol.ac.uk/privacy

LEARNER INFORMATION

Personal information is collected by the ESFA in accordance with the terms and conditions of funding imposed on providers of learning, for example, further education colleges and private training organisations. Your personal information is processed by the DfE, and by those third party organisations when they process your information on behalf of the DfE, to enable the DfE to carry out its functions.

Learner information collected by the ESFA is known as the Individualised Learner Record (ILR). The specification and standards for the ILR are published for each academic year (1 August to 31 July) by the ESFA. This specification provides more information about the use of your information.

Some learning is funded by other public authorities where it is necessary to share learner information with those organisations in order that they can carry out their functions, as follows:

- Department for Work and Pensions, for European Social Fund funding
- Mayoral Combined Authorities and the Greater London Authority, for devolved adult education budget funding

Learner contact information collected by the ESFA may be used for the purposes of research and surveys to enable the DfE to carry out its functions or, where learning is funded by the European Social Fund (ESF), for the Department for Work and Pensions to carry out its functions. This contact information will only be used for the purposes of other research and surveys with the consent of the learner. The ESFA Privacy Notice can be found here <https://www.gov.uk/government/publications/esfa-privacy-notice>

Learner information is also collected and supplied to the Learning Records Service, a part of the ESFA. Your information is used by the ESFA to issue learners with a Unique Learner Number, and to create and maintain your Personal Learning Record. More information about this use of learner information is published by the Learning Record Service. <https://www.gov.uk/guidance/how-to-access-your-personal-learning-record>

ACCESS YOUR INFORMATION

You can have the right to request a copy of the information that we hold on you. If you would like a copy of some or all of your information please email records@dudleycol.ac.uk or write to:

Data Protection Officer
Dudley College of Technology
The Broadway
Dudley College
DY1 4AS

The college will respond to your request as quickly as possible, no longer than 1 month.

PLEASE NOTE:

Although every effort is made to ensure the accuracy and reliability of information in this course guide you should be aware that times, dates, costs, provision and other details may be subject to change without notice. All information on our courses is relevant to those who have been resident in the UK/EU for at least 3 years*. Residents from non-EU countries should contact our International Office on 01384 363 356 or email: international@dudleycol.ac.uk

Please be aware that the college may not be able to provide services or courses in a range of circumstances, including: low class numbers; long term illness of specialist staff; industrial action; severe weather conditions; severe damage to buildings or equipment; and any circumstances which may affect the health and safety of staff or learners. In such circumstances, the college reserves the right to withdraw any course or service without notice.

In the event that you enrol on a course and it becomes apparent that you are not suited to that course (based on initial assessment, quality of course work submitted or other relevant criteria) the college reserves the right to transfer you to a more appropriate, alternative course or, if there are no suitable alternatives, to withdraw your place. Similarly, progress from one stage of a programme to the next stage (e.g. year 1 to year 2) is subject to satisfactory academic progress and conduct.

Enrolment on all courses is on a first come first serve basis.
*Some exceptions apply e.g. asylum seekers.



Apply online
NOW!

Dudley Sixth
Ednam Road
Dudley
West Midlands
DY1 1HL

Email: info@dudleysixth.co.uk

Freephone: 0800 783 6095

Visit our website: www.dudleysixth.co.uk

Designed by happy-giraffe.com